

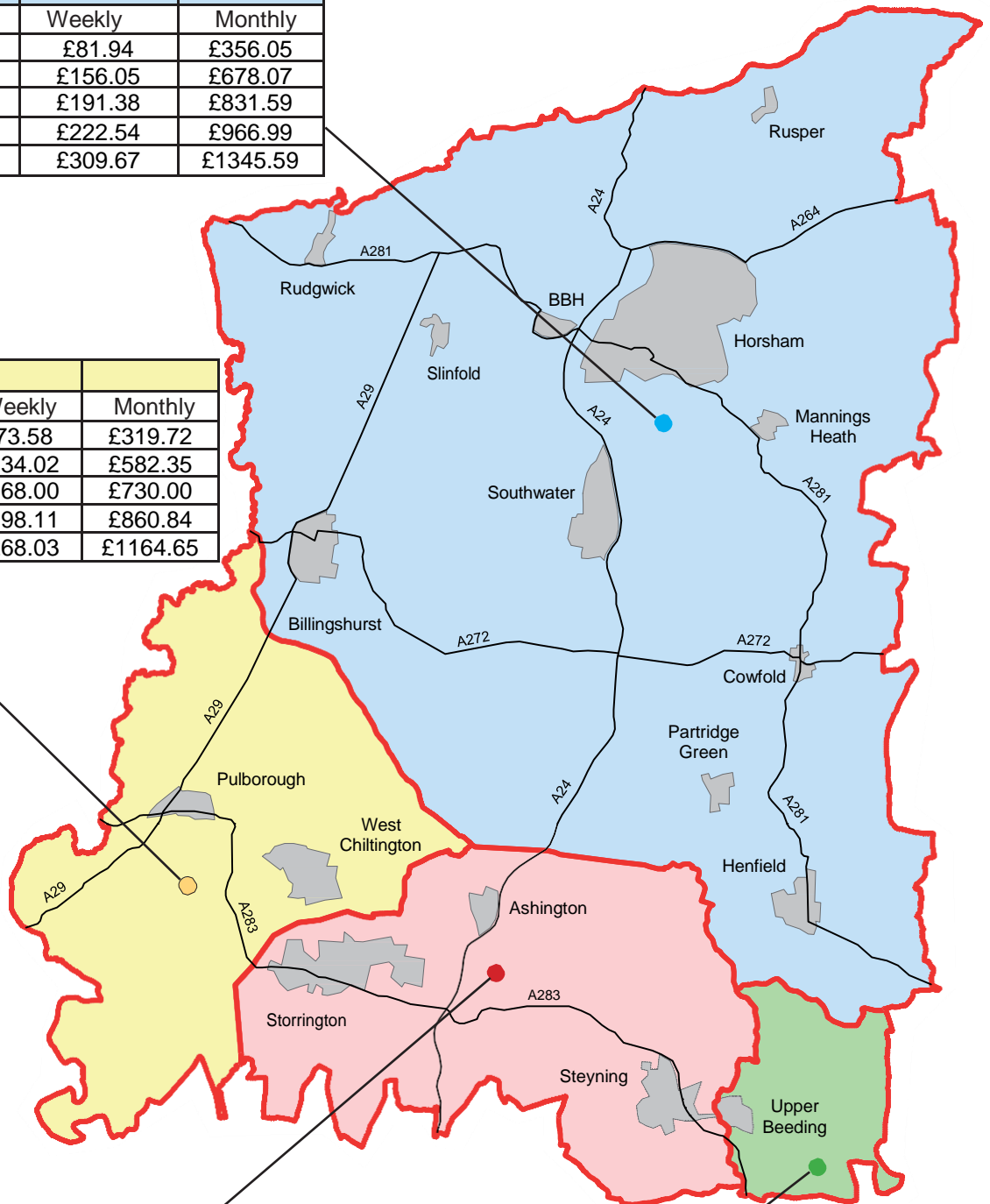
LOCAL HOUSING ALLOWANCE RATES FOR APRIL 2018

Horsham District Council is made up of four areas for Local Housing Allowance

Your Housing Benefit will be based on these rates if you rent your accommodation from a private landlord. If you are unsure which area your property falls into please check with the housing benefit office. The amount of benefit you receive will depend upon your financial and family circumstances.

| Crawley & Reigate BRMA | | |
|------------------------|---------|----------|
| Size of accommodation | Weekly | Monthly |
| Shared | £81.94 | £356.05 |
| One Bedroom | £156.05 | £678.07 |
| Two Bedroom | £191.38 | £831.59 |
| Three Bedroom | £222.54 | £966.99 |
| Four Bedroom | £309.67 | £1345.59 |

| Chichester BRMA | | |
|-----------------------|---------|----------|
| Size of accommodation | Weekly | Monthly |
| Shared | £73.58 | £319.72 |
| One Bedroom | £134.02 | £582.35 |
| Two Bedroom | £168.00 | £730.00 |
| Three Bedroom | £198.11 | £860.84 |
| Four Bedroom | £268.03 | £1164.65 |



| Worthing BRMA | | |
|-----------------------|---------|----------|
| Size of accommodation | Weekly | Monthly |
| Shared | £69.19 | £300.65 |
| One Bedroom | £120.06 | £521.69 |
| Two Bedroom | £153.02 | £664.91 |
| Three Bedroom | £185.29 | £805.13 |
| Four Bedroom | £246.00 | £1068.93 |

| Brighton & Hove BRMA | | |
|-----------------------|---------|----------|
| Size of accommodation | Weekly | Monthly |
| Shared | £82.66 | £359.18 |
| One Bedroom | £153.02 | £664.91 |
| Two Bedroom | £198.25 | £861.44 |
| Three Bedroom | £230.28 | £1000.62 |
| Four Bedroom | £339.36 | £1474.60 |

