



Horsham  
District  
Council

# Council Tax 2022/23

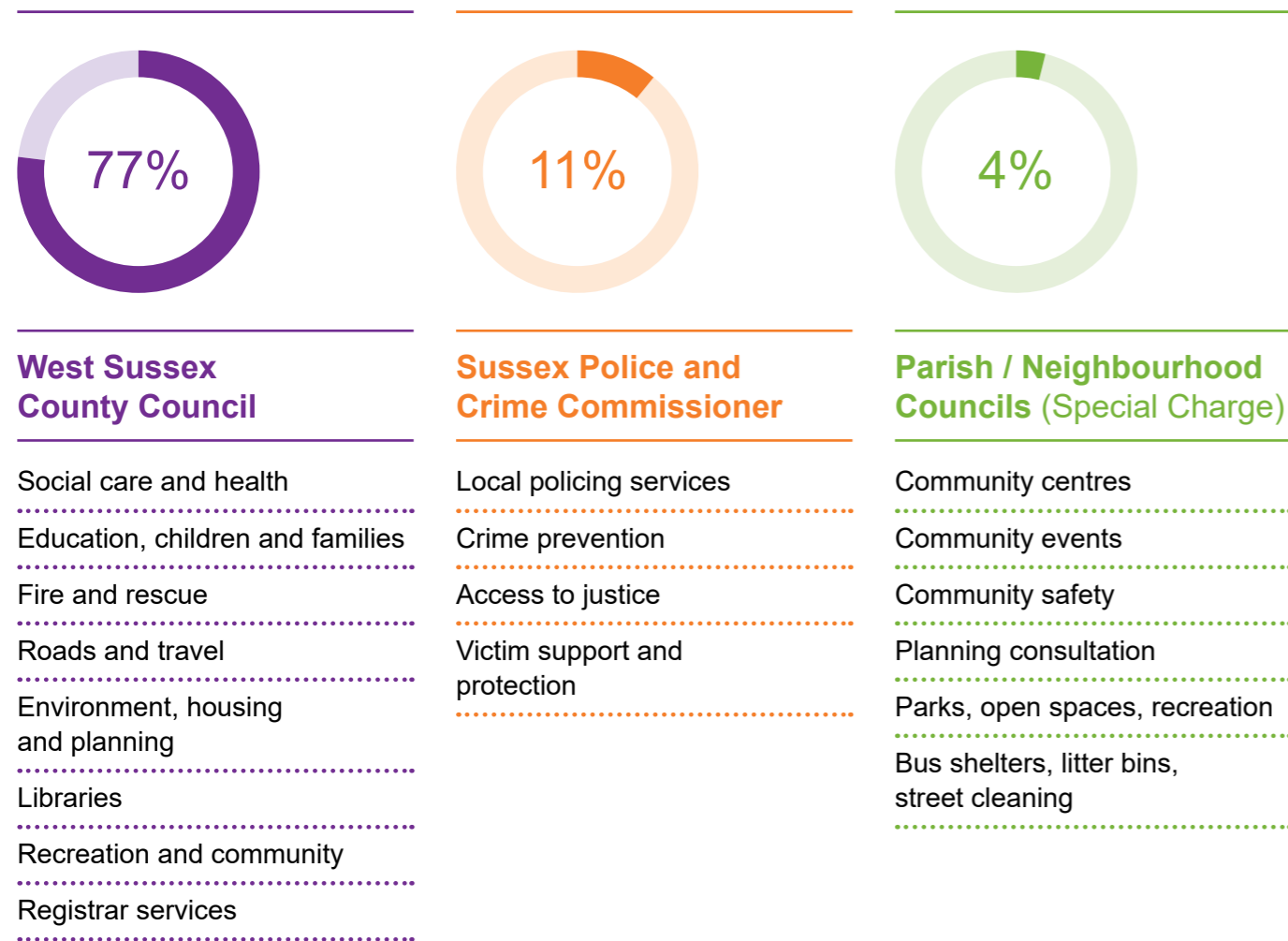
How your Council Tax is spent



# Where does your Council Tax go?

Horsham District Council collects Council Tax on behalf of Parish and Neighbourhood Councils, the Sussex Police and Crime Commissioner and West Sussex County Council to provide services and amenities to residents.

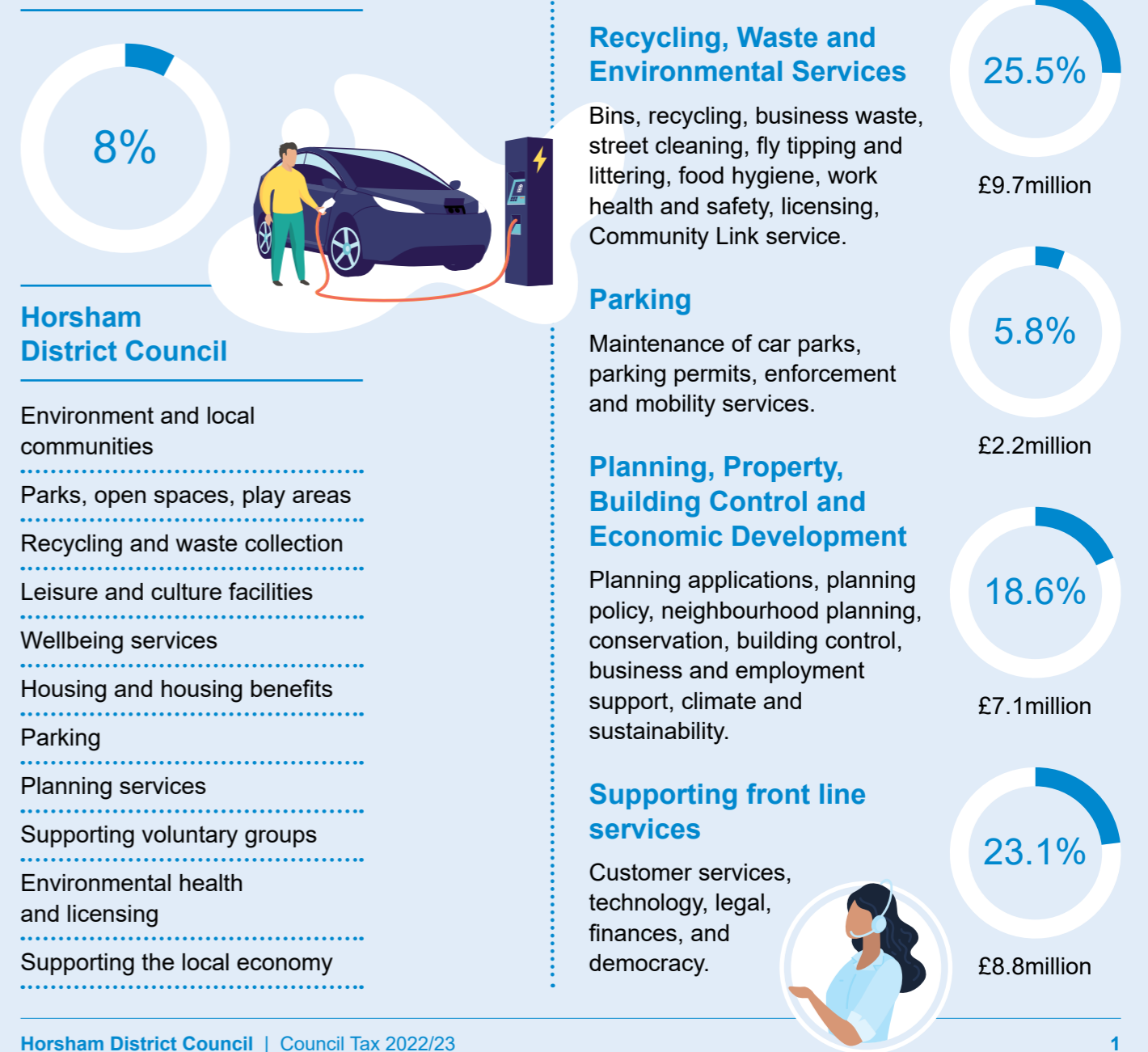
Although we collect all the Council Tax, we only retain some 8% for Horsham District Council services. That's just £3.12 a week for a Band D property. The remainder is split over the other providers as outlined below:



\* numbers rounded

# How does Horsham District Council spend your money?

Your Council Tax makes up 27% of our income. This contributes towards our total budget for 2022/23 of £38.1million, and this is how it will be spent:



## Horsham District Council

- Environment and local communities
- Parks, open spaces, play areas
- Recycling and waste collection
- Leisure and culture facilities
- Wellbeing services
- Housing and housing benefits
- Parking
- Planning services
- Supporting voluntary groups
- Environmental health and licensing
- Supporting the local economy

## Leisure and Culture

Parks and open spaces, play areas, Horsham Museum & Art Gallery, The Capitol, leisure centres, sports facilities and activities.

## Revenues and Benefits, Housing and Community Services

Council Tax, benefits, business rates, housing support, homelessness, health and wellbeing, volunteer support, community safety, emergency planning.

## Recycling, Waste and Environmental Services

Bins, recycling, business waste, street cleaning, fly tipping and littering, food hygiene, work health and safety, licensing, Community Link service.

## Parking

Maintenance of car parks, parking permits, enforcement and mobility services.

## Planning, Property, Building Control and Economic Development

Planning applications, planning policy, neighbourhood planning, conservation, building control, business and employment support, climate and sustainability.

## Supporting front line services

Customer services, technology, legal, finances, and democracy.

# Council charges for 2022/23

This table shows the total amount of Council Tax payable for properties within each area of the District. The charge includes the West Sussex County Council, the Sussex Police and Crime Commissioner and where applicable Parish Council or Special charge elements.

**For example:** A Band D property in Southwater will pay a total charge of £2,058.24. Of this amount £1,555.74 is due to West Sussex County Council, £224.91 goes to the Sussex Police and Crime Commissioner, £115.50 passes to the Parish Council. Horsham District Council retains only £162.09.

Parish/area	Band A (£)	Band B (£)	Band C (£)	Band D (£)	Band E (£)	Band F (£)	Band G (£)	Band H (£)
Amberley	1,359.15	1,585.68	1,812.21	2,038.73	2,491.78	2,944.83	3,397.88	4,077.46
Ashington	1,354.30	1,580.02	1,805.73	2,031.45	2,482.88	2,934.32	3,385.75	4,062.90
Ashurst	1,356.06	1,582.07	1,808.08	2,034.09	2,486.11	2,938.13	3,390.15	4,068.18
Billingshurst	1,363.01	1,590.17	1,817.34	2,044.51	2,498.85	2,953.18	3,407.52	4,089.02
Bramber	1,340.17	1,563.53	1,786.90	2,010.26	2,456.98	2,903.71	3,350.43	4,020.52
Broadbridge Heath	1,331.62	1,553.56	1,775.49	1,997.43	2,441.30	2,885.18	3,329.05	3,994.86
Coldwaltham	1,318.44	1,538.18	1,757.92	1,977.66	2,417.14	2,856.62	3,296.10	3,955.32
Colgate	1,306.17	1,523.87	1,741.56	1,959.26	2,394.65	2,830.04	3,265.43	3,918.52
Cowfold	1,348.78	1,573.58	1,798.38	2,023.18	2,472.77	2,922.37	3,371.96	4,046.35
Henfield	1,362.62	1,589.72	1,816.82	2,043.93	2,498.13	2,952.34	3,406.55	4,087.86
Itchingfield	1,356.38	1,582.44	1,808.50	2,034.57	2,486.69	2,938.82	3,390.94	4,069.13
Lower Beeding	1,339.95	1,563.27	1,786.59	2,009.92	2,456.57	2,903.22	3,349.86	4,019.84
North Horsham	1,321.74	1,542.02	1,762.31	1,982.60	2,423.18	2,863.76	3,304.34	3,965.21
Nuthurst	1,327.53	1,548.78	1,770.04	1,991.29	2,433.80	2,876.31	3,318.82	3,982.58
Parham	1,323.49	1,544.07	1,764.65	1,985.23	2,426.39	2,867.55	3,308.71	3,970.46
Pulborough	1,361.31	1,588.20	1,815.08	2,041.97	2,495.74	2,949.51	3,403.28	4,083.94
Rudgwick	1,343.48	1,567.39	1,791.30	2,015.22	2,463.04	2,910.87	3,358.69	4,030.43
Rusper	1,324.68	1,545.46	1,766.24	1,987.02	2,428.58	2,870.14	3,311.70	3,974.04
Shermanbury	1,349.97	1,574.96	1,799.96	2,024.95	2,474.94	2,924.93	3,374.92	4,049.90
Shipley	1,325.32	1,546.21	1,767.10	1,987.99	2,429.76	2,871.54	3,313.31	3,975.97
Slinfold	1,339.59	1,562.86	1,786.12	2,009.39	2,455.92	2,902.45	3,348.98	4,018.78
Southwater	1,372.16	1,600.85	1,829.55	2,058.24	2,515.63	2,973.01	3,430.40	4,116.48
Steyning	1,380.31	1,610.36	1,840.41	2,070.46	2,530.56	2,990.67	3,450.77	4,140.92
Storrington & Sullington	1,345.41	1,569.64	1,793.88	2,018.11	2,466.58	2,915.05	3,363.52	4,036.22
Thakeham	1,333.84	1,556.15	1,778.46	2,000.76	2,445.38	2,889.99	3,334.60	4,001.52
Upper Beeding	1,392.50	1,624.58	1,856.66	2,088.75	2,552.91	3,017.08	3,481.25	4,177.50
Warnham	1,355.88	1,581.86	1,807.84	2,033.82	2,485.78	2,937.74	3,389.70	4,067.64
Washington	1,320.64	1,540.75	1,760.85	1,980.96	2,421.17	2,861.39	3,301.60	3,961.92
West Chiltington	1,340.57	1,564.00	1,787.43	2,010.86	2,457.72	2,904.58	3,351.43	4,021.72
West Grinstead	1,331.81	1,553.77	1,775.74	1,997.71	2,441.65	2,885.58	3,329.52	3,995.42
Wiston	1,321.57	1,541.83	1,762.10	1,982.36	2,422.88	2,863.41	3,303.93	3,964.72
Woodmancote	1,326.94	1,548.09	1,769.25	1,990.40	2,432.72	2,875.03	3,317.34	3,980.81
Horsham Town – Special charge	1,313.05	1,531.89	1,750.73	1,969.57	2,407.25	2,844.93	3,282.62	3,939.14

# Financial information for residents

The table below shows the costs of providing Council services and the sources of income, including Housing Benefit grants and payments, which are taken into account when calculating the Council Tax requirements.

	£m
Gross Service Expenditure	61.584
Less Service Income	(49.396)
<b>Net Expenditure Budget*</b>	<b>12.188</b>
Contribution to general reserves	0.596
Services grant - government grant	(0.141)
Settlement Funding Assessment (business rates share)	(2.052)
<b>Council Tax Requirement</b>	<b>10.591</b>
Less funded by Special Charge taxpayers	(0.323)
Less share from Collection Fund / other	(0.011)
Cost of extra Council Tax Support discretionary relief scheme	0.120
<b>District Council Tax Requirement</b>	<b>10.377</b>

Average Band D	2022/23 £	2021/22 £	Increase %
Horsham District Council excluding parishes and unparished	162.09	157.52	2.90
Police and Crime Commissioner	224.91	214.91	4.65
West Sussex County Council	1,555.74	1,510.56	2.99

\* Details of the 2022/23 Budget can be found [here](#).

# Parish Council budget requirements

Details of expenditure for Parish Councils where gross expenditure and precept exceed £200,000.

Parish	2022/23			2021/22		
	Gross Expenditure** £	Gross Income** £	Precept £	Gross Expenditure** £	Gross Income** £	Precept £
Billingshurst	554,115	109,380	444,735	512,085	103,306	408,779
Henfield	314,405	37,050	277,355	298,056	33,000	265,056
North Horsham	537,591	188,580	349,011	532,645	194,045	338,600
Pulborough	279,615	22,253	257,362	261,013	17,350	243,663
Southwater	666,372	128,850	537,522	798,012	110,700	687,312
Steyning	438,977	106,620	332,357	393,375	71,070	322,305
Storrington & Sullington	482,025	229,535	252,490	486,115	240,725	245,390
Upper Beeding	220,850	8,000	212,850	207,492	8,000	199,492

\*\* Including movements in/out of reserves where applicable.



Horsham  
District  
Council